

KLIMATYZATORY KOREL - CENNIK- 2022.

Model	Chłodz (kW)	Grzanie (kW)	SEER/SCOP	Rury plyn/gaz	max. długość inst. / max. wys instal.	Cena PLN
AKIRA, INVERTER, WIFI READY						
KAC-12XA61	3,40	3,42	6,1/4,0	1/4" (fi 6,35) 3/8" (fi 9,53)	25 m / 10 m	1960
KAC-24XA61	6,81	6,87	6,1/4,0	3/8" (fi 9,53) 5/8" (fi 15,9)	25 m / 10 m	4500
WiFi moduł						115
AKIRA BLACK, INVERTER, WIFI READY						
KAC-12XA82	3,40	3,42	6,1/4,0	1/4" (fi 6,35) 3/8" (fi 9,53)	25 m / 10 m	2170
WiFi moduł						115
NEXO, WIFI, R32						
KOR32-09HFN8-IX	2,64	2,90	6,2/4,0	1/4" (fi 6,35) 3/8" (fi 9,53)	25 m / 10 m	630
KOR32-09HFN8-OX, A++/A+						1300 komplet 1930
KOR32-18HFN8-IX	5,30	5,60	7,1/4,0	1/4" (fi 6,35) 1/2" (fi 12,7)	30 m / 20 m	1170
KOR32-18HFN8-OX, A++/A+						2080 komplet 3250
KOR32-24HFN8-IX	7,00	7,30	6,1/4,0	3/8" (fi 9,53) 5/8" (fi 15,9)	50 m / 25 m	1300
KOR32-24HFN8-OX, A++/A+						3270 komplet 4570
URBAN, WIFI R32, matt panel						
KSAJA-12DCE - komplet	3,60	3,70	6,12/4,14	1/4" (fi 6,35) 3/8" (fi 9,53)	20 m / 10 m	2080
KSAJA-18DCE - komplet	5,30	5,60	5,4/5,8	1/4" (fi 6,35) 1/2" (fi 12,7)	20 m / 10 m	3540
URBAN ART, WIFI R32, mirror panel						
KSAJP-12DCE	3,60	3,70	6,12/4,14	1/4" (fi 6,35) 3/8" (fi 9,53)	20 m / 10 m	2890
KSAJP-18DCE	5,40	5,80	6,57/4,02	1/4" (fi 6,35) 1/2" (fi 12,7)	20 m / 10 m	4450
OPTIMUS, WIFI R32						
KMA32-09FNX	2,64	2,90	7,1/4,0	1/4" (fi 6,35) 3/8" (fi 9,53)	25 m / 10 m	680

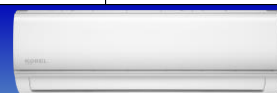
KMA32-09FN8, A++/A+	2,64	2,90	7,1/4,0	1/4" (fi 6,35) 3/8" (fi 9,53)	25 m / 10 m	1500 komplet 2180
KMA32-12FNX	3,50	3,80	7,0/4,1	1/4" (fi 6,35) 3/8" (fi 9,53)	25 m / 10 m	770
KMA32-12FN8, A++/A+						1610 komplet 2380
KMA32-18FNX	5,30	5,60	6,4/4,0	1/4" (fi 6,35) 1/2" (fi 12,7)	30 m / 20 m	1230
KMA32-18FN8, A++/A+						2320 komplet 3550

FREE MATCH - MULTI

FREE MATCH - jednostki zewnętrzne

K20E-18HFN8, R32, A++/A+, do 2 j.w. NEW, grzałki elektryczne	5,30	5,60	6,3/4,0	1/4" (fi 6,35) 3/8" (fi 9,53)	30 m / 10 m	3960
K30-21FN8, R32, A++/A+, do 3 j.w.	6,10	6,60	6,5/4,0	1/4" (fi 6,35) 3/8" (fi 9,53)	45 m / 10 m	4460
K30G-21FN8, R32, A++/A+, do 3 j.w. NEW, grzałki elektryczne	6,10	6,60	6,5/4,0	1/4" (fi 6,35) 3/8" (fi 9,53)	45 m / 10 m	4640
K30F-27HFN8, R32, A++/A+, do 3 j.w.	7,90	8,20	6,1/3,8	1/4" (fi 6,35) 3/8" (fi 9,53)	45 m / 10 m	5450
K30A-27HFN8, R32, A++/A+, do 3 j.w. NEW, grzałki elektryczne	7,90	8,20	6,1/3,8	1/4" (fi 6,35) 3/8" (fi 9,53)	45 m / 10 m	5720
K40-36FN8, R32, A++/A+, do 4 j.w. NEW, grzałki elektryczne	10,55	12,00	6,5/4,0	1/4" (fi 6,35) 3/8" (fi 9,53)	60 m / 10 m	8590

FREE MATCH jedn.wewn NEXO, R32/R410A



KOR32-09HFN8-IX	2,80	2,90	1/4" (fi 6,35) 3/8" (fi 9,53)	20 m / 10 m	630
KOR32-18HFN8-IX	5,30	5,60	1/4" (fi 6,35) 1/2" (fi 12,7)	20 m / 10 m	1170

FREE MATCH jedn.wewn - OPTIMUS, R32/R410A



KMA32-09FNX	2,80	2,90	1/4" (fi 6,35) 3/8" (fi 9,53)	20 m / 10 m	680
KMA32-12FNX	3,50	3,80	1/4" (fi 6,35) 3/8" (fi 9,53)	20m / 10 m	770
KMA32-18FNX	5,30	5,60	1/4" (fi 6,35) 1/2" (fi 12,7)	20 m / 10 m	1230

FREE MATCH jedn.wewn - kasetonowy, R32/R410A



KCA3-18FNXD0, R32	5,30	5,60	1/4" (fi 6,35) 1/2" (fi 12,7)	20 m / 10 m	1870
KCA3U-18HRFNX(GA), R32, NEW	5,30	5,60	1/4" (fi 6,35) 1/2" (fi 12,7)	20 m / 10 m	1960

Model	Cooling (kW)	Heating (kW)	SEER/SCOP	Pipes liquid/gas	max. długość inst. / max. wys instal..	Cena PLN
-------	--------------	--------------	-----------	------------------	----------------------------------------	----------

LCAC - jednostki zewnętrzne, R32



KOU-12FN8-QDO, R32A++/A+	3,50	3,80	dtr	1/4" (fi 6,35) 3/8" (fi 9,53)	25 m / 10 m	2420
KOU-18HFN8-Q(GA), R32, A++/A+, NEW, grzałki elektryczne	5,30	5,60	dtr	1/4" (fi 6,35) 1/2" (fi 12,7)	30 m / 20 m	3690
KOU-24FN8-QD0, R32, A++/A+	7,00	7,40	dtr	3/8" (fi 9,53) 5/8" (fi 15,9)	50 m / 25 m	4320
KOU-36FN8-RD0, 380V, R32, A++/A+	10,30	11,60	dtr	3/8" (fi 9,53) 5/8" (fi 15,9)	65 m / 30 m	7810
KOE30U-36HFN8-RD0, 380V, R32, A++/A+, NEW, grzałki elektryczne	10,30	11,60	dtr	3/8" (fi 9,53) 5/8" (fi 15,9)	65 m / 30 m	8350

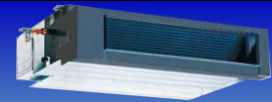
KOU-55FN8-RD0, 380V, R32, A++/A+	15,40	17,70	dtr	3/8" (fi 9,53) 5/8" (fi 15,9)	65 m / 30 m	10190
----------------------------------	-------	-------	-----	----------------------------------	-------------	-------

LCAC - kasetonowy



KCA3-18FNXD0, R32, A++/A+	5,30	5,60	6,3/4,0	1/4" (fi 6,35) 1/2" (fi 12,7)	IR + WIRED REMOTE C.	1870
KCA3U-18HRFNX(GA), R32, NEW	5,30	5,60	6,3/4,0	1/4" (fi 6,35) 1/2" (fi 12,7)	IR + WIRED REMOTE C.	1960
KCD-24FNX, R410A/R32, A++/A+	7,00	7,60	6,1/4,0	3/8" (fi 9,53) 5/8" (fi 15,9)	IR + WIRED REMOTE C.	2170
KCD1-36HRFN8(GA), R32, A++/A+, NEW	10,50	11,10	6,1/4,0	3/8" (fi 9,53) 5/8" (fi 15,9)	IR + WIRED REMOTE C.	2680
KCD-55FNX, R410/R32, A+/A+, SLIM	15,50	18,20	6,1/4,0	3/8" (fi 9,53) 5/8" (fi 15,9)	IR + WIRED REMOTE C.	3320

LCAC - kanałowy



KTI-12HWFNX, R32, A++/A+	3,50	4,10	6,5/4,0	1/4" (fi 6,35) 3/8" (fi 9,53)	IR + WIRED REMOTE C.	1680
KTI-18HWFNX, R32, A++/A+	5,30	5,60	6,1/4,0	1/4" (fi 6,35) 1/2" (fi 12,7)	IR + WIRED REMOTE C.	1780
KTI-36HWFNX, R32, A++/A+	10,50	11,10	6,1/4,0	3/8" (fi 9,53) 5/8" (fi 15,9)	IR + WIRED REMOTE C.	2910
KTI-55HWFNX, R32, A++/A+	15,20	18,20	6,1/4,0	3/8" (fi 9,53) 5/8" (fi 15,9)	IR + WIRED REMOTE C.	3180

LCAC - sufitowo-podłogowy



KUE-18FNX, R32, A++/A+	5,30	5,60	6,1/4,0	3/8" (fi 9,53) 5/8" (fi 15,9)	IR + WIRED REMOTE C.	1680
KUE-24FNX, R32, A++/A+	6,90	7,60	6,1/4,0	3/8" (fi 9,53) 5/8" (fi 15,9)	IR + WIRED REMOTE C.	1960
KUE-55FNX, R32, A++/A+	15,90	18,20	6,1/4,0	3/8" (fi 9,53) 5/8" (fi 15,9)	IR + WIRED REMOTE C.	3080

UWAGA: Ceny netto +VAT. Zastrzegamy sobie prawo do zmiany cen !

